

## Answers: [5.2.1.7 Lab - Install Windows 7 or Vista](#)

### Introduction

In this lab, you will install the Windows 7 or Vista operating system.

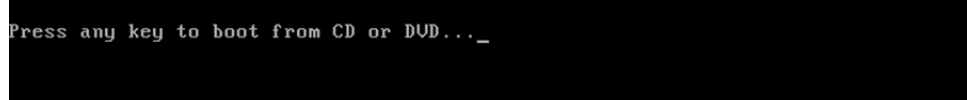
### Recommended Equipment

- A computer with a blank hard disk drive
- Windows 7 or Vista installation DVD or USB flash drive

## Part 1: Windows 7 Installation

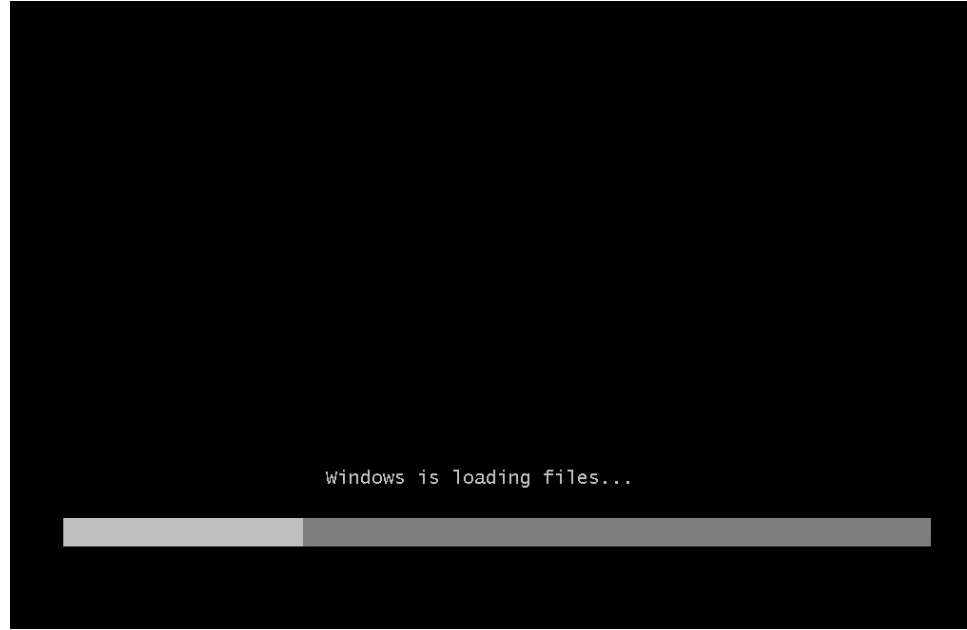
### Step 1: Starting the Installation Media

- Insert the Windows 7 installation DVD into the DVD-ROM drive or plug the USB flash drive into a USB port.
- When the computer starts up, watch for the message **Press any key to boot from CD or DVD**. If the message appears, press any key on the keyboard to boot the computer from the DVD. If the **press any key message** does not appear, the computer automatically starts loading files from the DVD.



```
Press any key to boot from CD or DVD..._
```

- The computer starts loading files from the DVD or USB flash drive.



```
Windows is loading files...
```

- d. The Windows 7 boot screen appears.



## Step 2: Configuring Initial Settings

- a. The **Install Windows** window opens. Press **Next** unless you need to change the default settings.

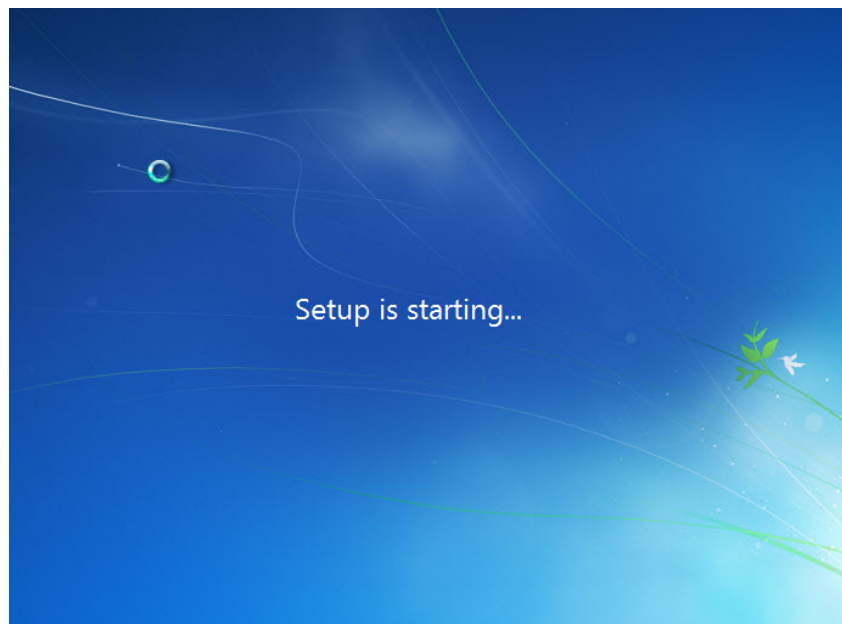


- b. Press **Install now** to continue.



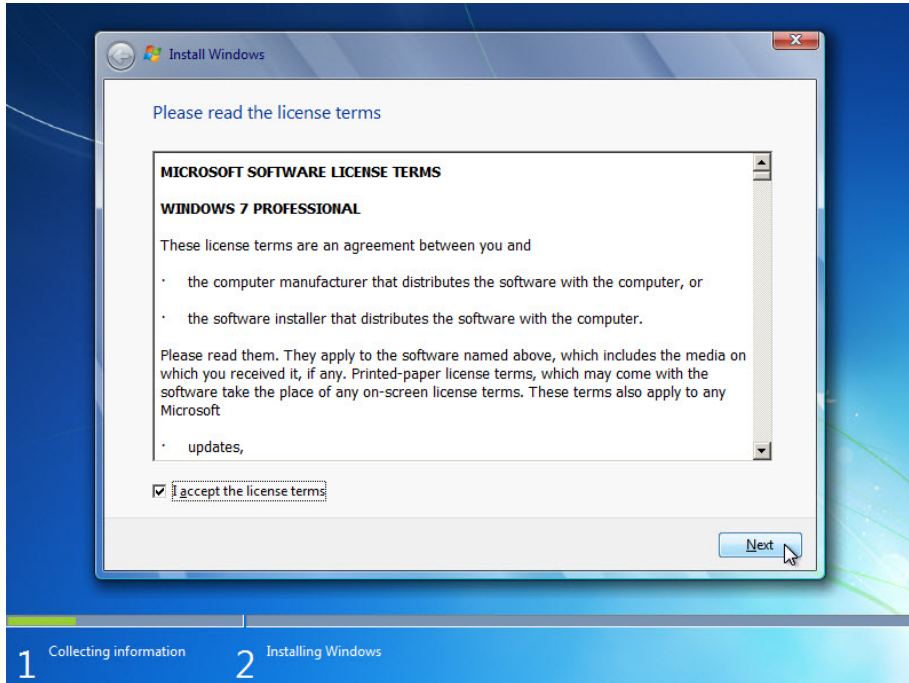
### Step 3: Collecting Information

- a. The **Setup is starting...** screen appears.

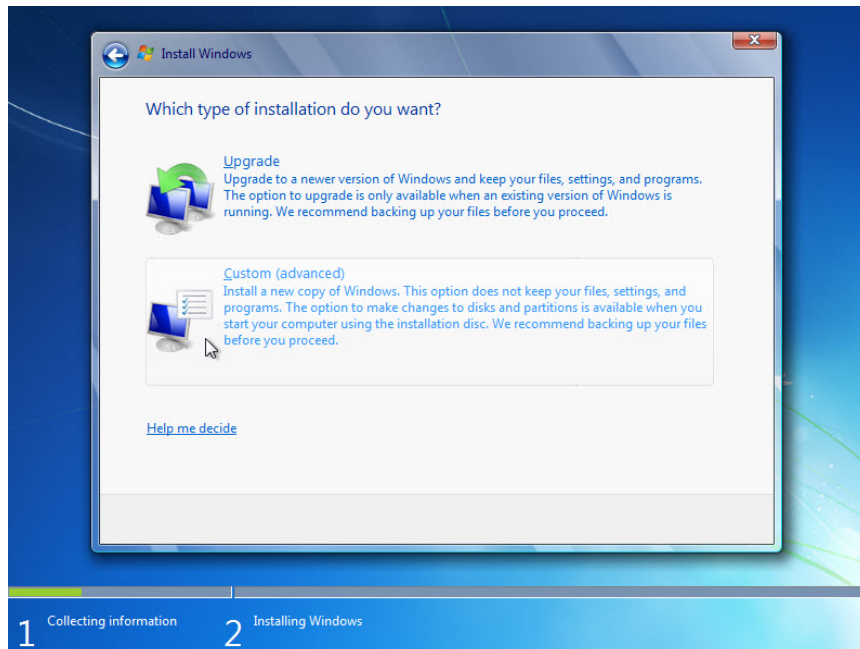


## Lab - Install Windows 7 or Vista

- b. The **Please read the license terms** window opens. Read and confirm that you accept the license by selecting **I accept the license terms**. Click **Next**.

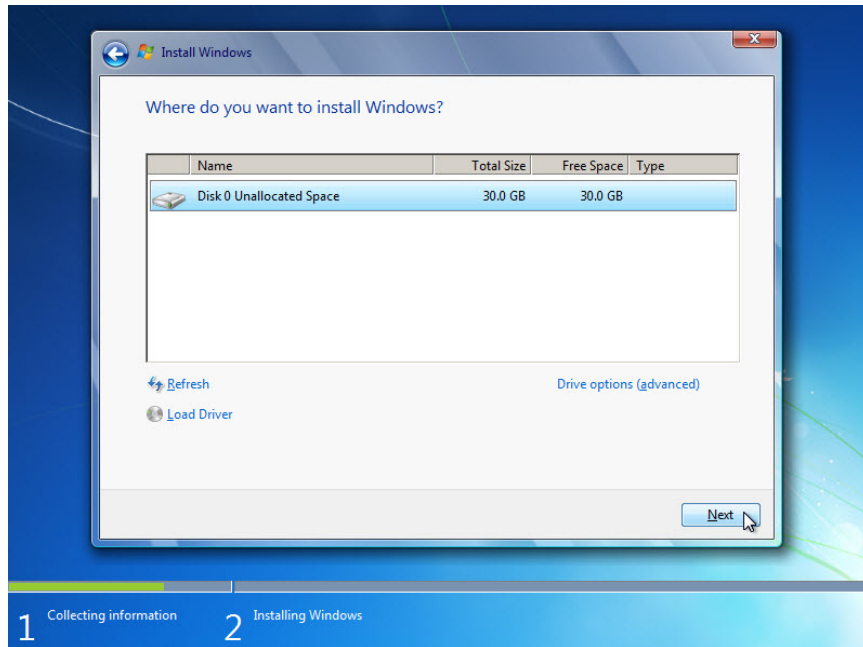


- c. When the **Which type of installation do you want?** window opens, click **Custom (advanced)** to continue.



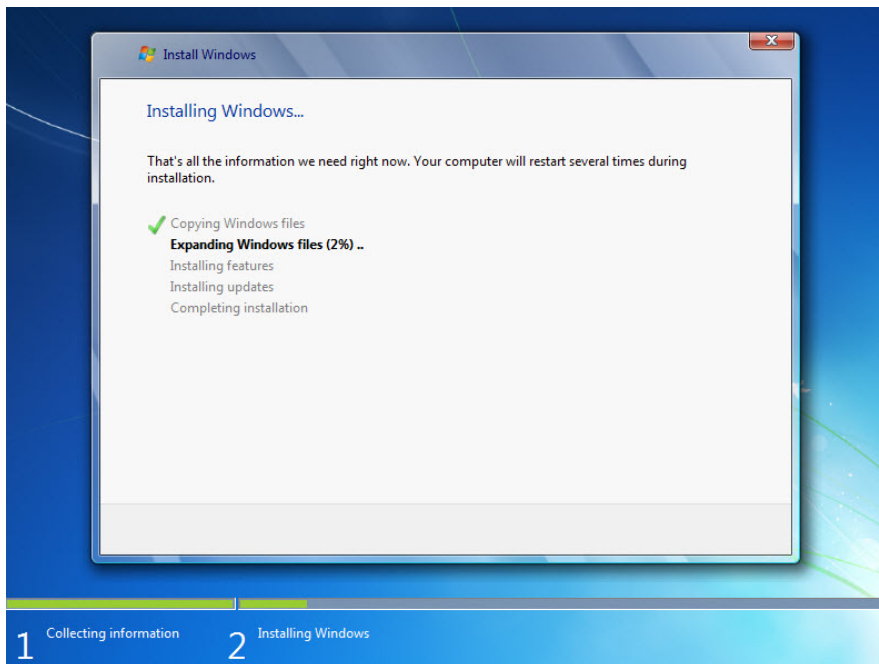
## Lab - Install Windows 7 or Vista

- d. The **Where do you want to install Windows?** window opens. Select the hard drive or partition on which Windows 7 will be installed. Click **Next** to select **Disk 0 Unallocated Space**, which is the default setting.



### Step 4: Installing Windows

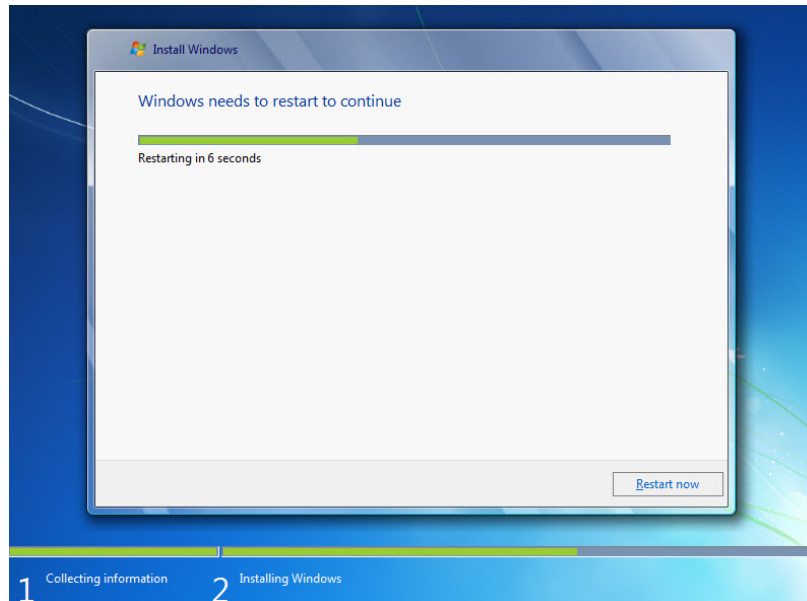
- a. The **Installing Windows...** window opens. Windows 7 Setup may take up to 50 minutes to configure your computer.



## Lab - Install Windows 7 or Vista

---

- b. The **Windows needs to restart to continue** window opens. Your computer will automatically restart or you can click **Restart now**.



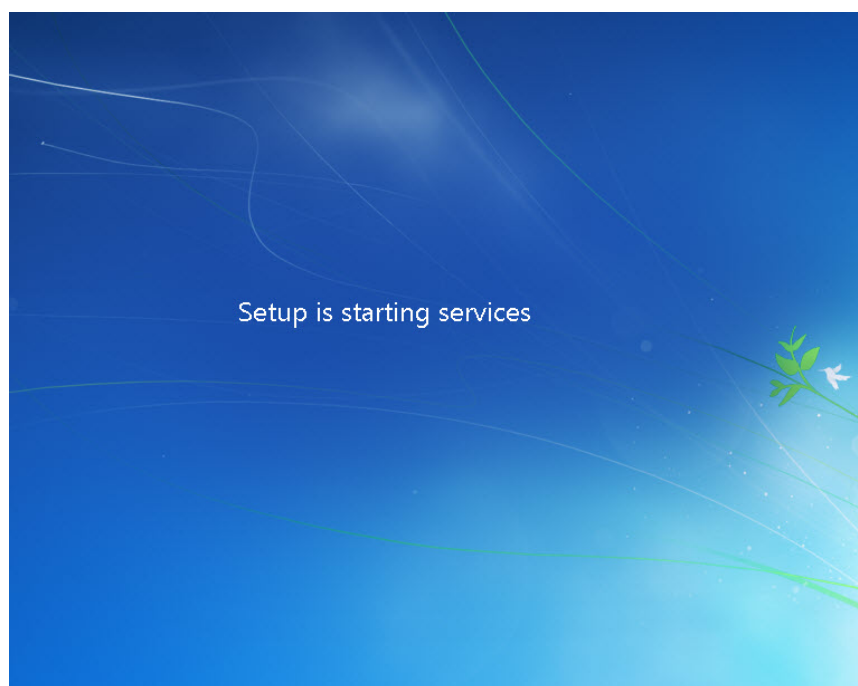
- c. If you get the message **Press any key to boot from CD or DVD...**, do not press any key and Windows will boot from the hard disk to continue the installation.

```
Press any key to boot from CD or DVD..._
```

- d. The **Setup is updating registry settings** screen appears.

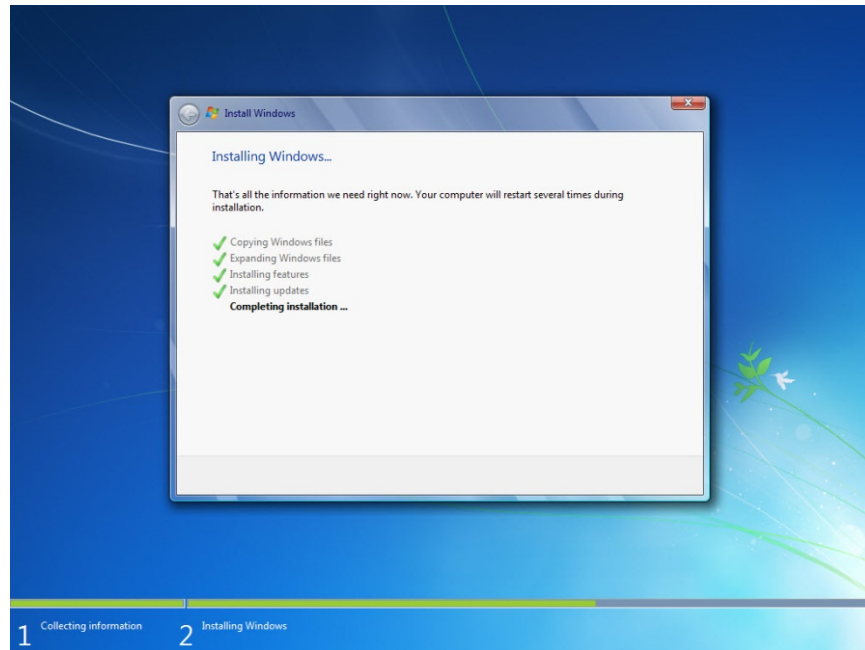


- e. The **Setup is starting services** screen appears.



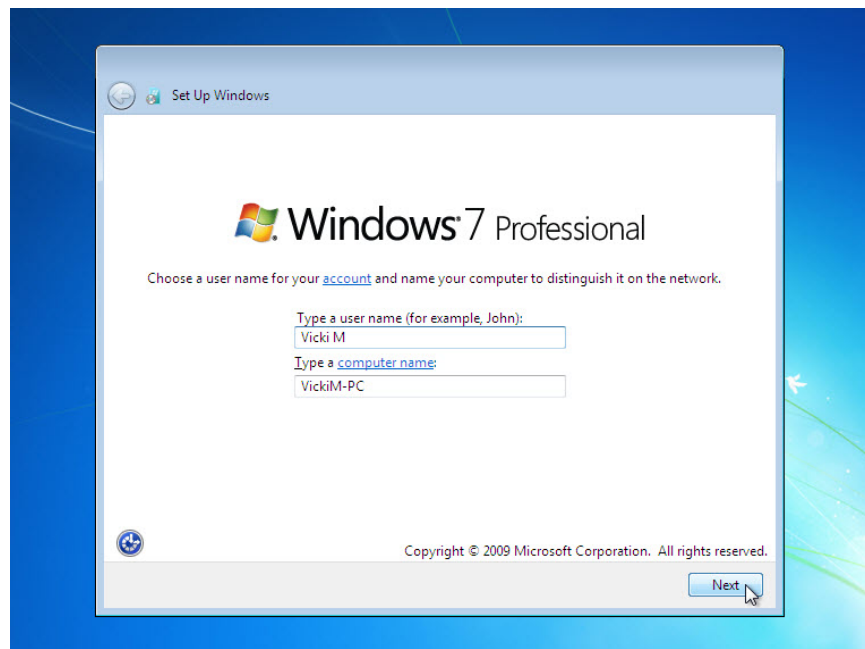
## Lab - Install Windows 7 or Vista

- f. The **Installing Windows...** window opens. Windows may reboot a few more times. This may take several minutes.



### Step 5: Setting up Windows

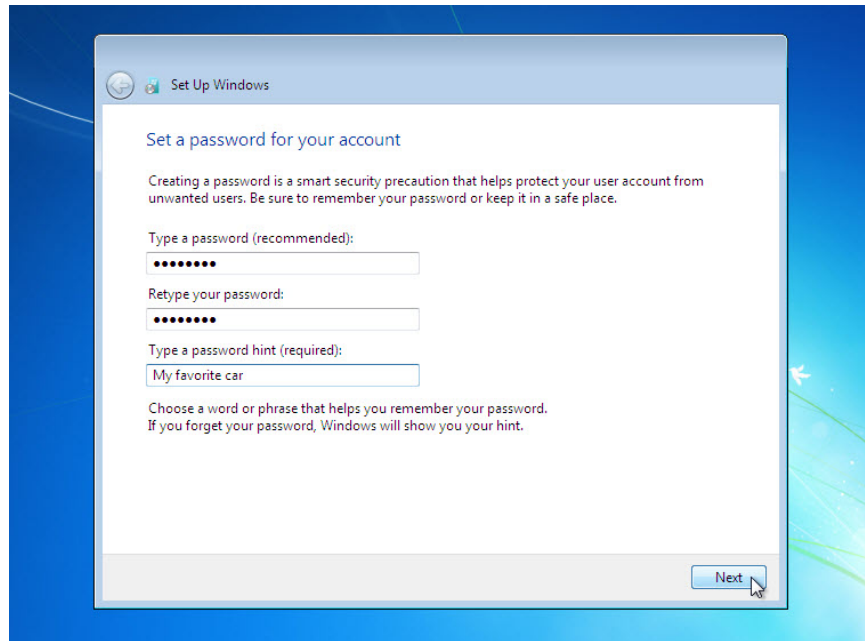
- a. Type the user name and computer name provided by your instructor. Click **Next**.



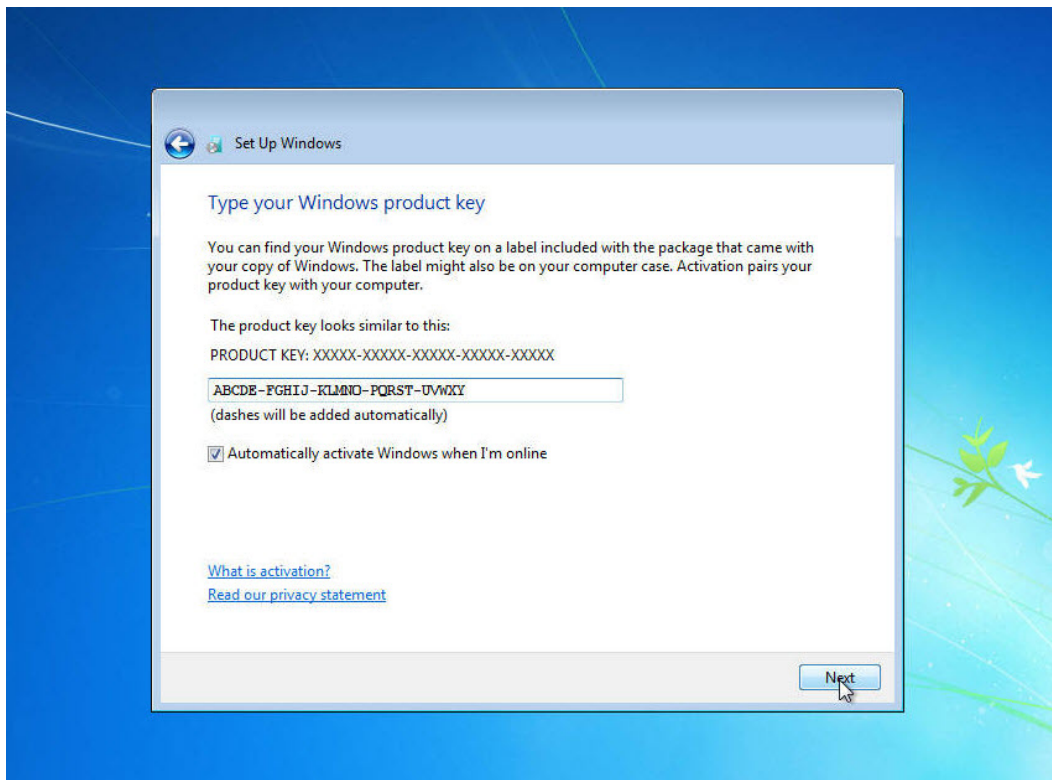


## Lab - Install Windows 7 or Vista

- b. The **Set a password for your account** window opens. Type the password provided by your instructor. Retype the password and enter the password hint. Click **Next**.



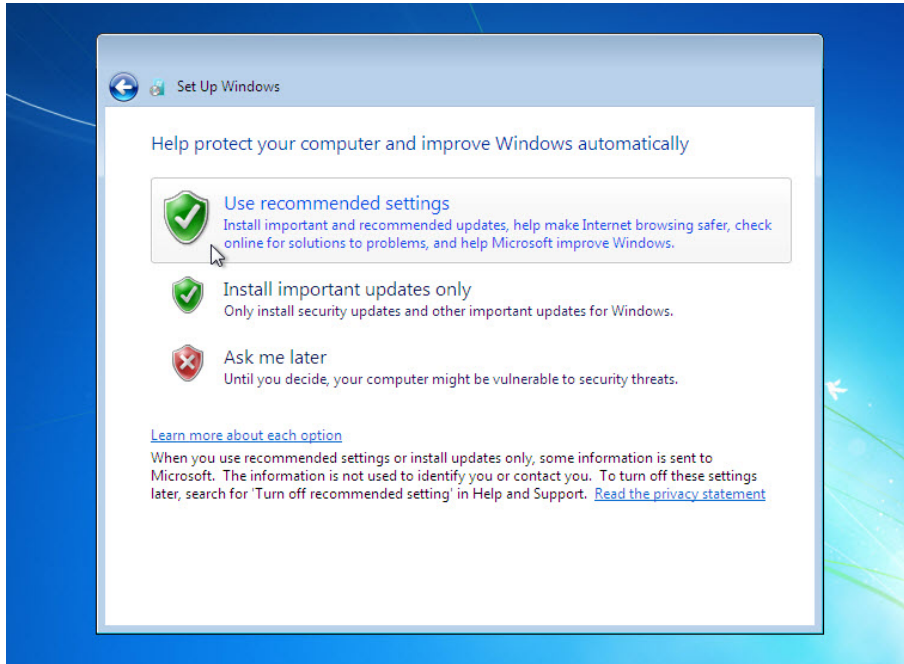
- c. The **Type your Windows product key** window opens. On this page, type your product key. Click **Next**.  
**Note:** You can find the product key on the case or sleeve in which the Windows DVD was packaged, or you can get it from your instructor.



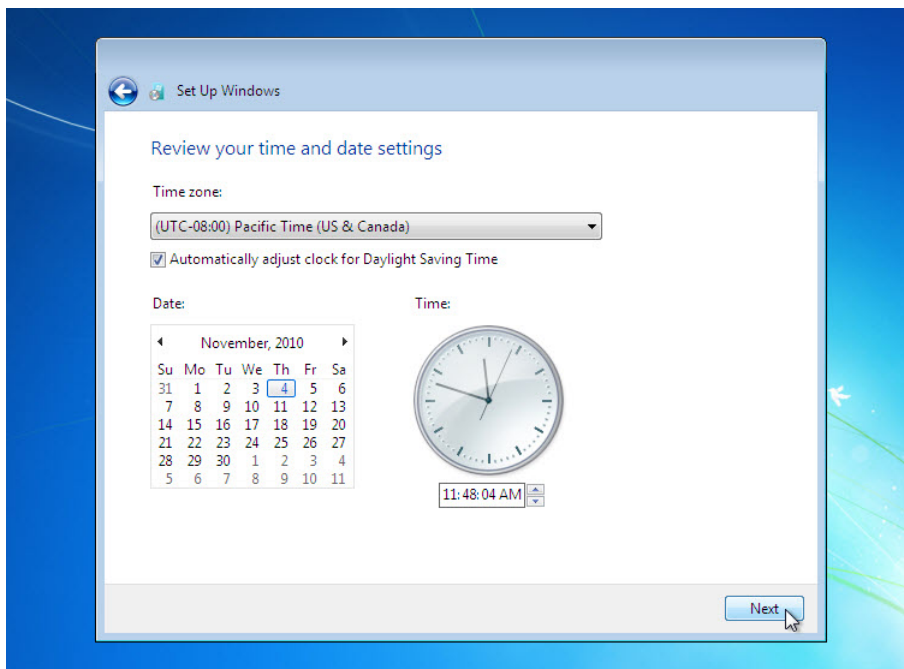
**Note:** If you entered your product key, Setup will not ask you the following:

**Do you want to enter your product key now?** If you were instructed not to enter a product key, click **No**.

- d. In the **Help protect your computer and improve Windows automatically** window, click **Use recommended settings**.



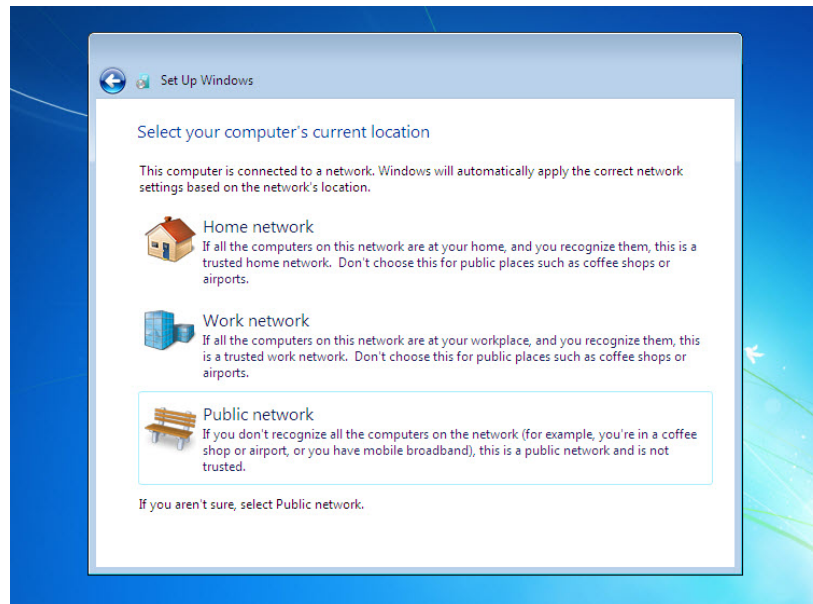
- e. In the **Review your time and date settings** window, configure the computer clock to match your local date, time, and time zone. Click **Next**.



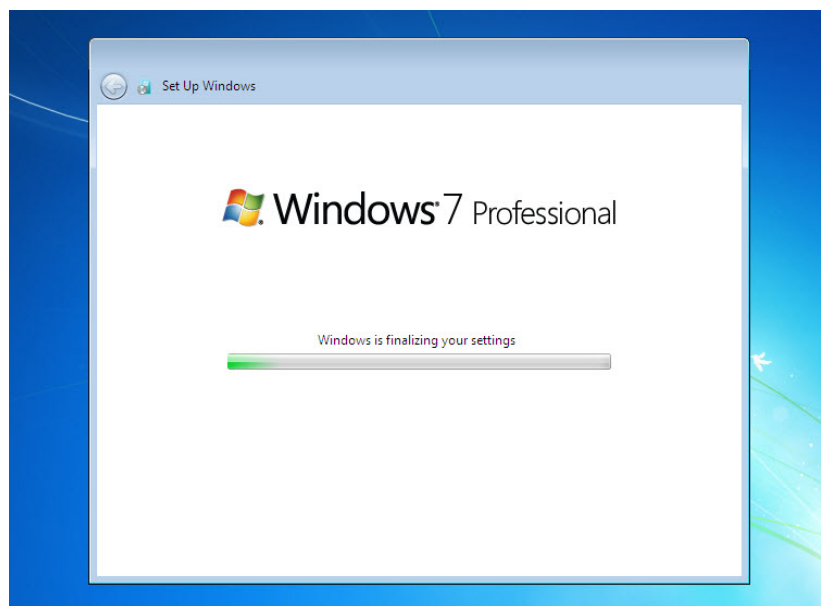
## Lab - Install Windows 7 or Vista

- f. The **Select your computer's current location** window opens. Select the option provided by your instructor.

**Note:** This window will not show up if the installation did not correctly install drivers for the network card.

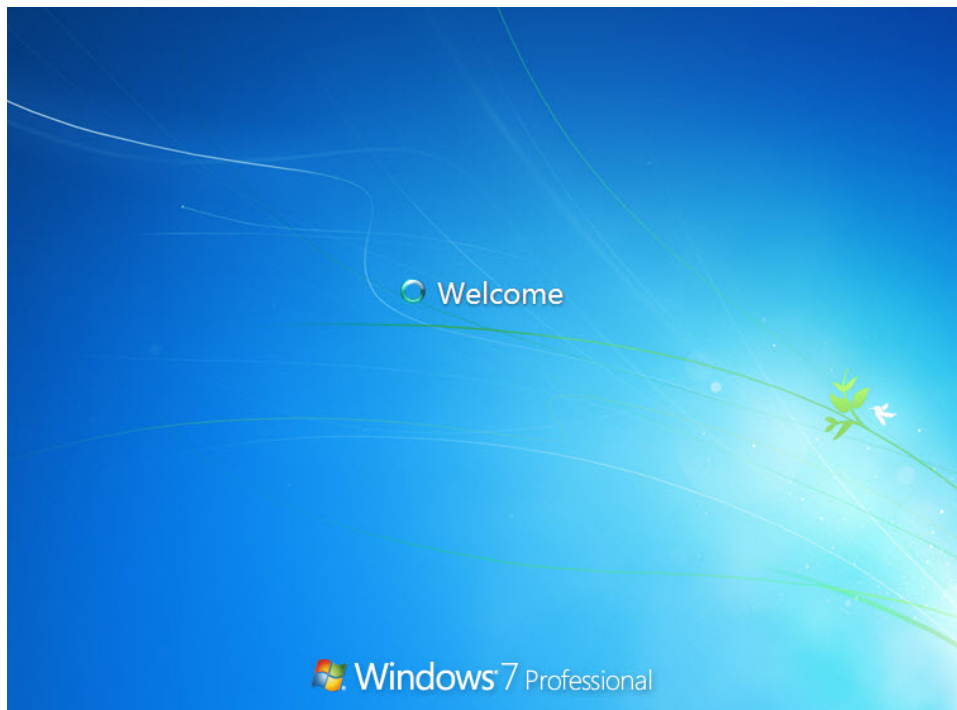


- g. The **Windows is finalizing your settings** window opens.

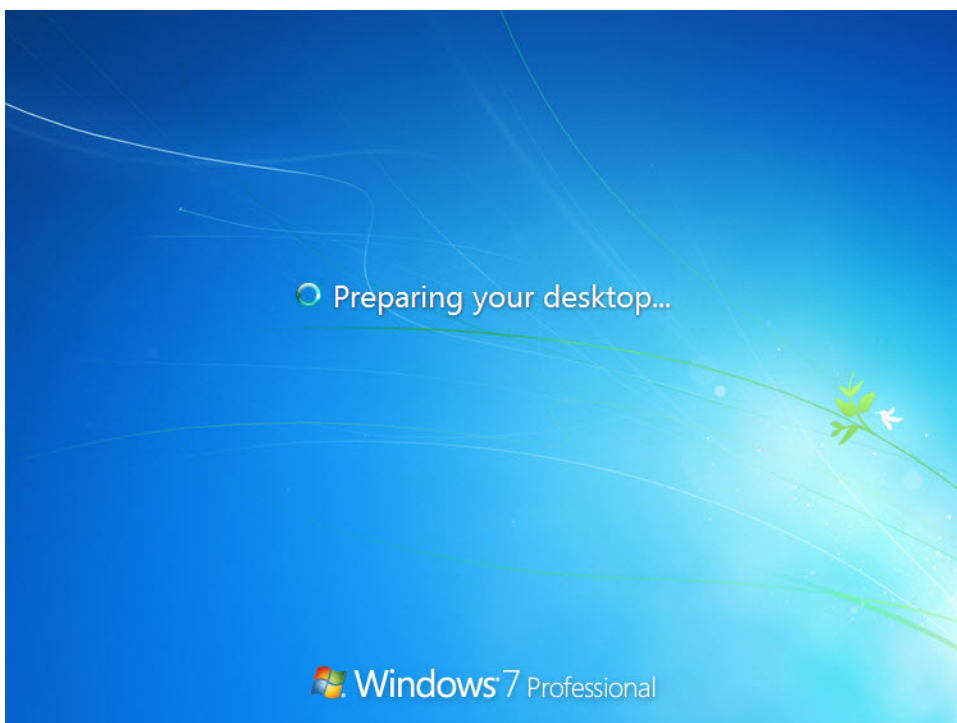


**Step 6: Logging into Windows**

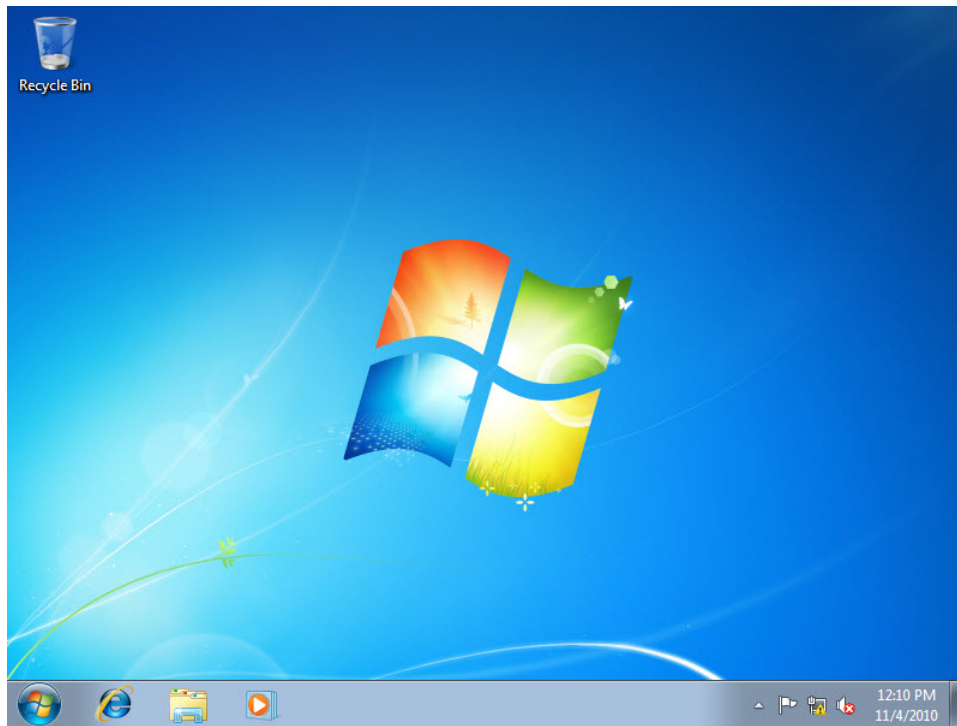
- a. The **Welcome** screen appears.



- b. The **Preparing your desktop...** screen appears.



- c. You are logged on to Windows 7 for the first time.



## Part 2: Windows Vista Installation

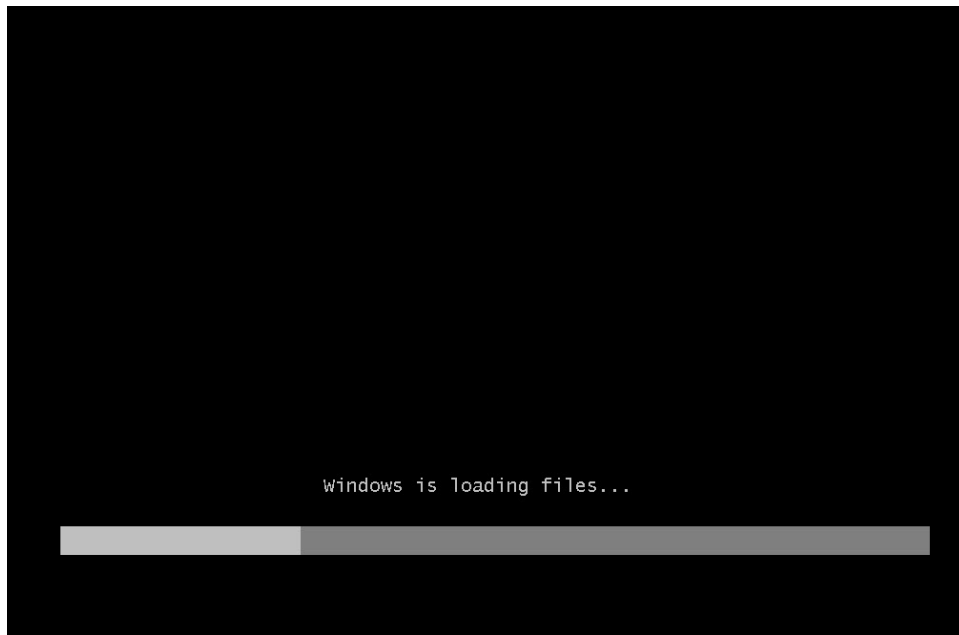
### Step 1: Starting the Installation Media

- Insert the Windows Vista installation DVD into the DVD-ROM drive or plug the USB flash drive into a USB port.
- When the computer starts up, watch for the message **Press any key to boot from CD or DVD**. Press any key to continue.

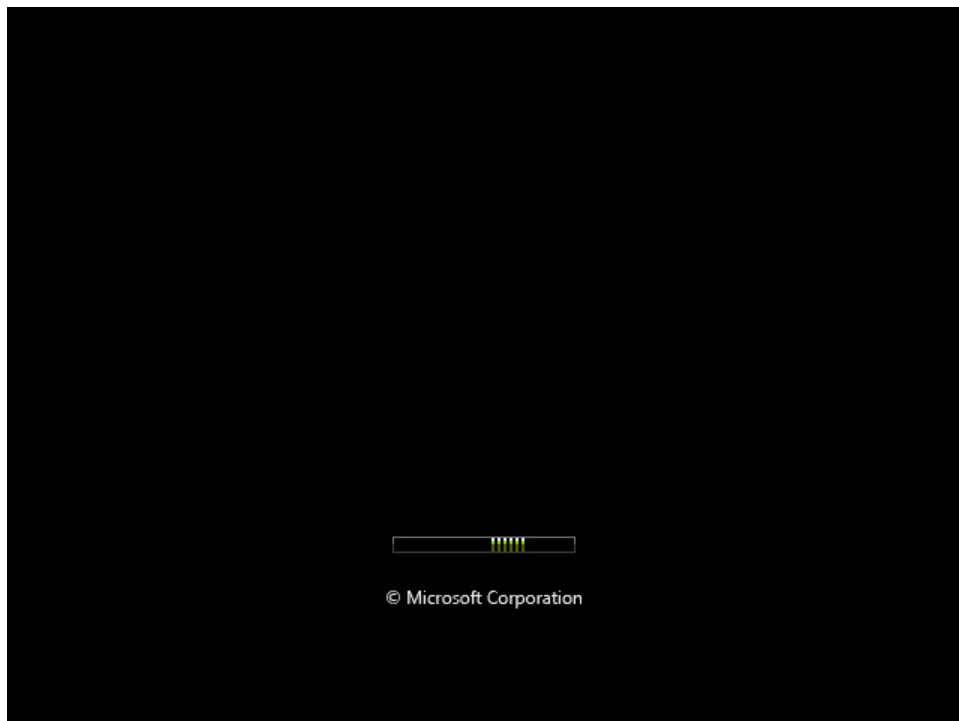
If the press any key message does not appear, the computer automatically starts loading files from the DVD.

```
Press any key to boot from CD or DVD..._
```

- c. The computer starts loading files from the DVD or USB flash drive.



- d. The Windows Vista boot screen appears.



## Step 2: Configuring the Initial Settings

- a. The **Install Windows** window opens. Press **Next** unless you need to change the default settings.



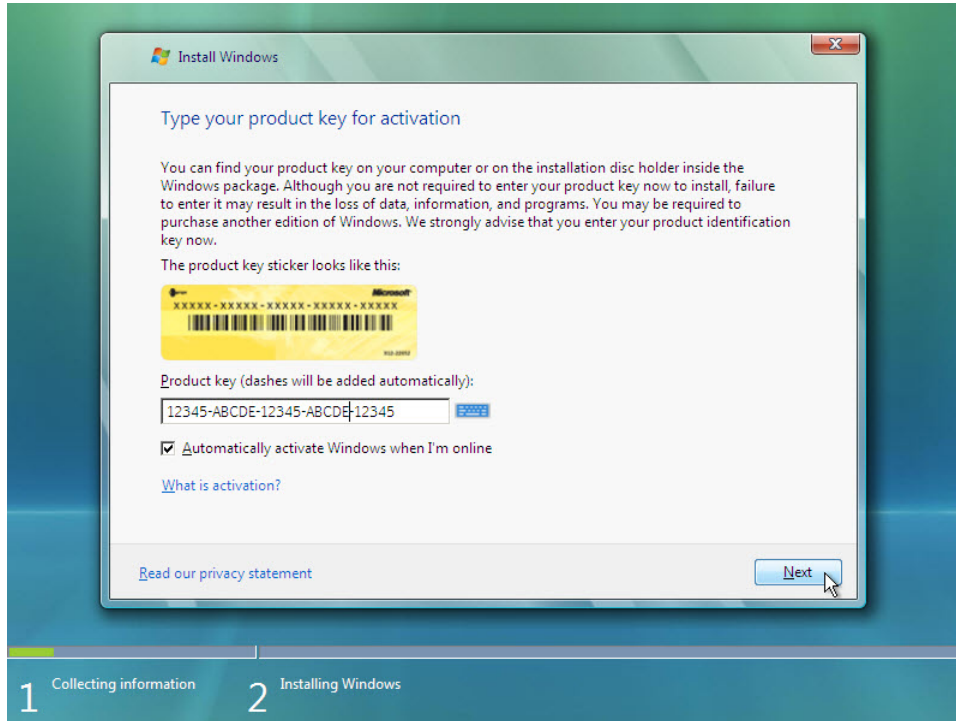
- b. Click **Install now** to continue.



**Step 3: Collecting Information**

- a. The **Type your product key for activation** screen appears. On this page, type your product key. Click **Next**.

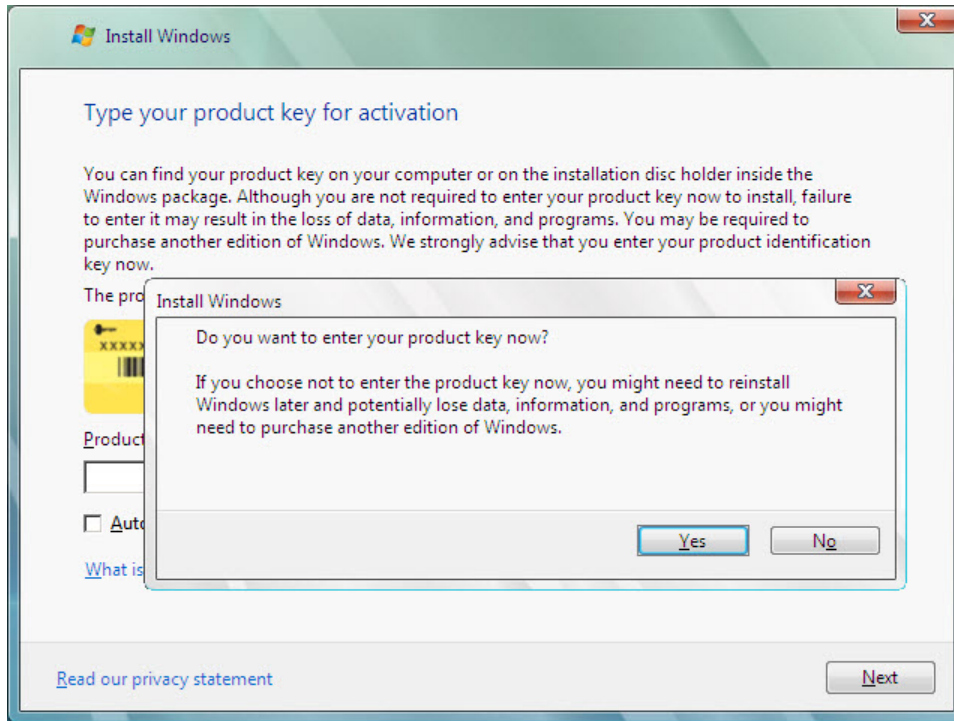
**Note:** You can find the product key on the case or sleeve in which the Windows DVD was packaged, or you can get it from your instructor.



**Note:** If you entered your product key, Setup will determine the Vista product edition to install and will not display the next two screens. Skip to step d.



- b. Because you have left the product key field blank, the **Do you want to enter your product key now?** window opens. If you were instructed not to enter a product key, click **No**.

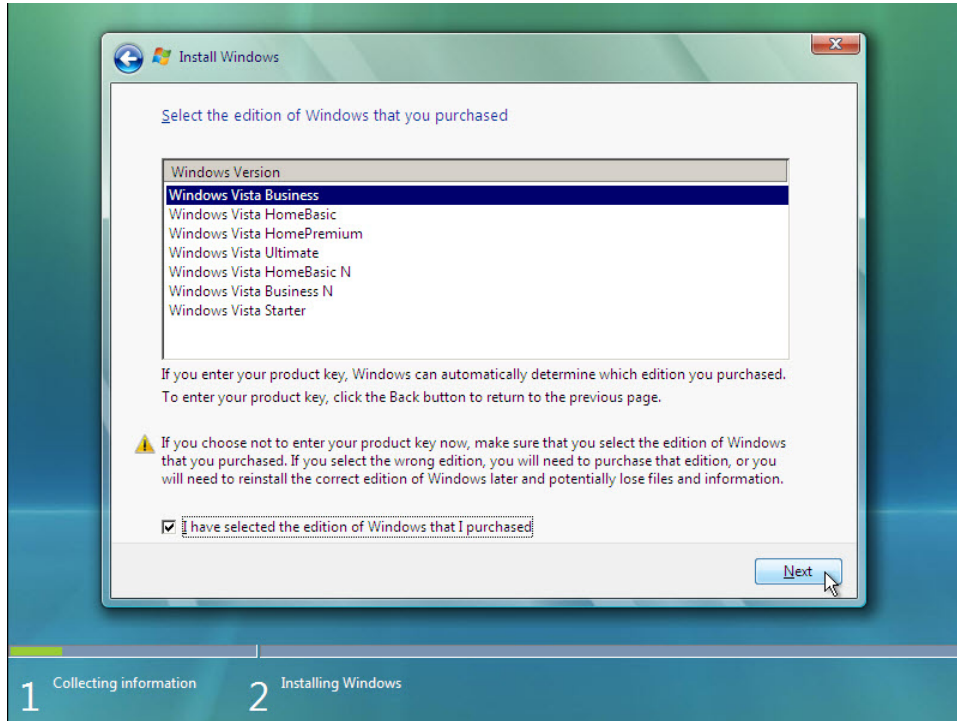


- c. Setup now prompts you to select the Vista version you purchased. In general, you should choose the version you purchased, but note that you can install any Vista version listed and experiment with it for a limited time before product activation requires you to activate the version you purchased.

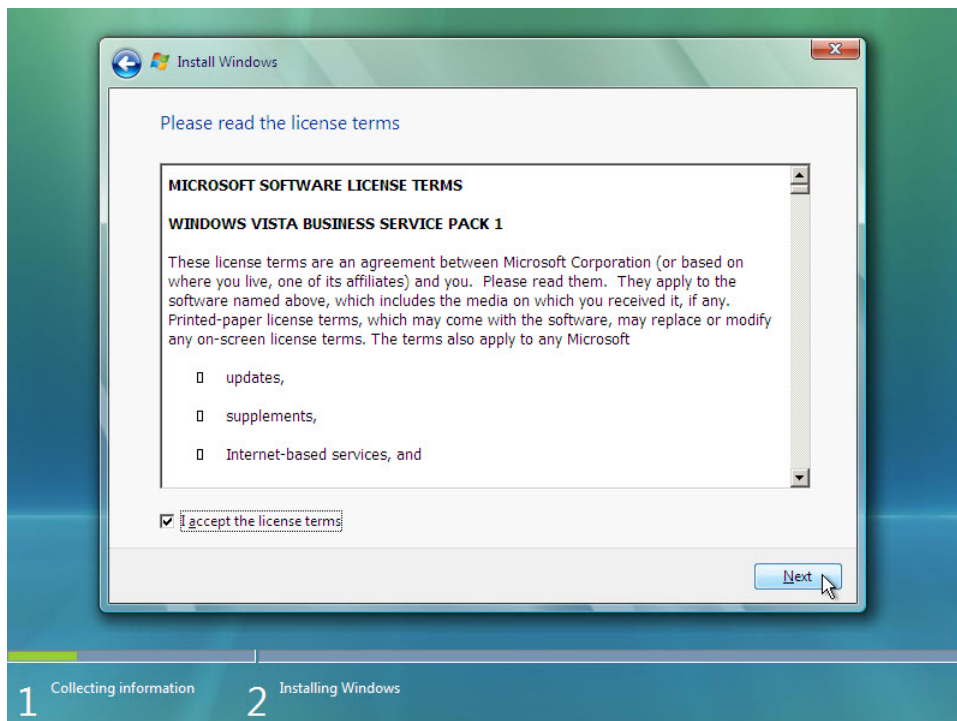
**Note:** Your product key will only activate the version of Vista you purchased.

## Lab - Install Windows 7 or Vista

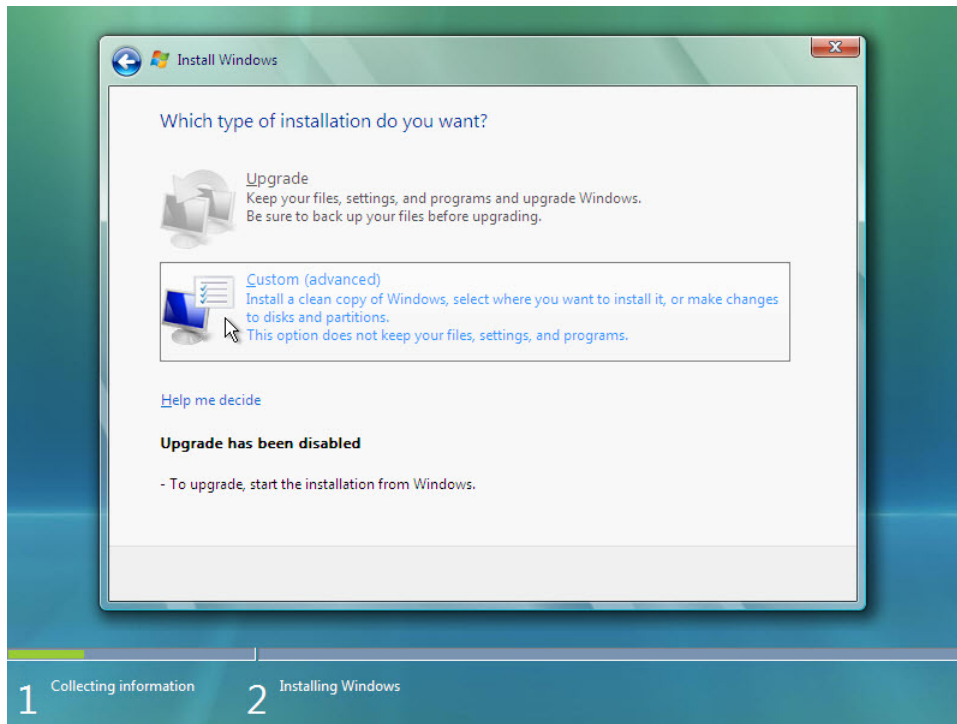
- d. Select the Windows Vista version that will be installed, check the item title **I have selected the edition of Windows that I purchased**, and then click **Next**.



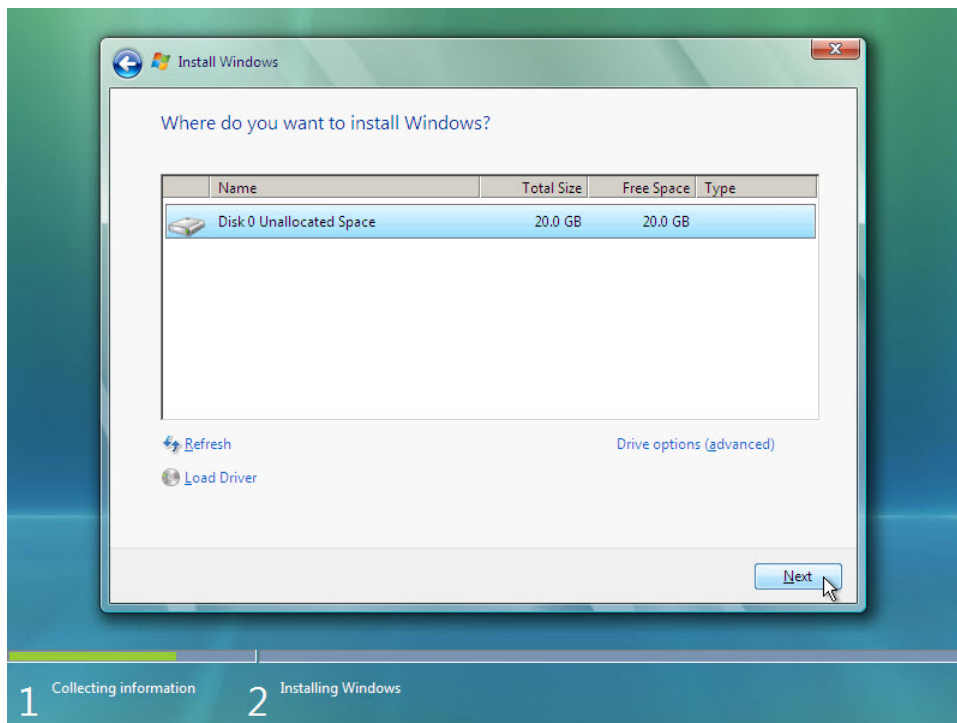
- e. The **Please read the license terms** window opens. Read and confirm that you accept the license by selecting the box **I accept the license terms**. Click **Next** to continue.



- f. The **Which type of installation do you want?** window opens. Click **Custom (advanced)**.

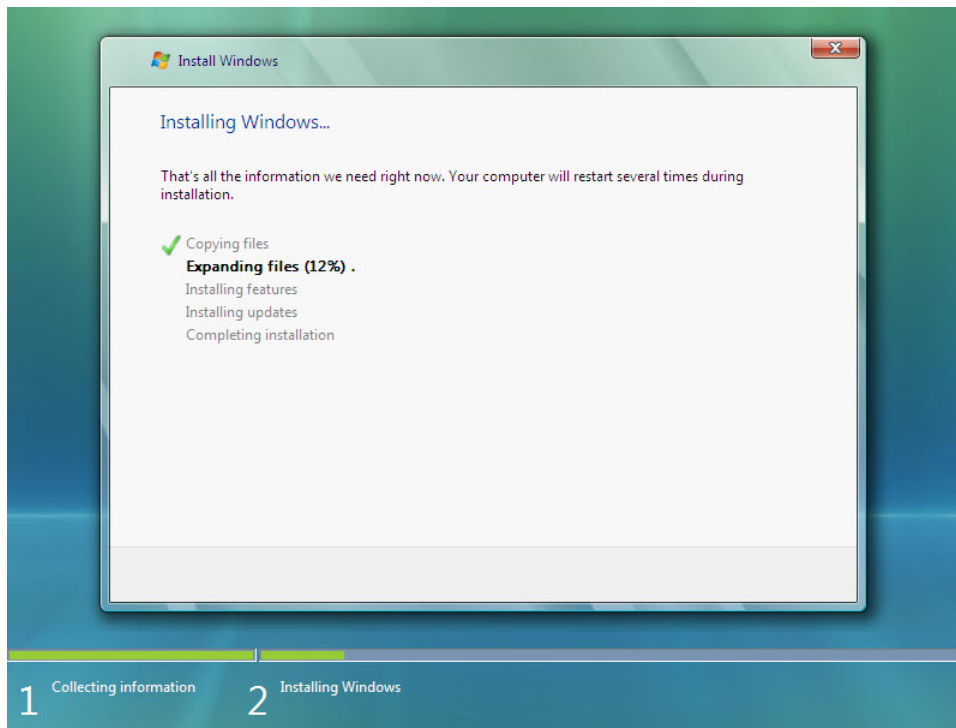


- g. The **Where do you want to install Windows?** window opens. Select the hard drive or partition on which Windows Vista will be installed. Click **Next** to select **Disk 0 Unallocated Space**, which is the default setting.

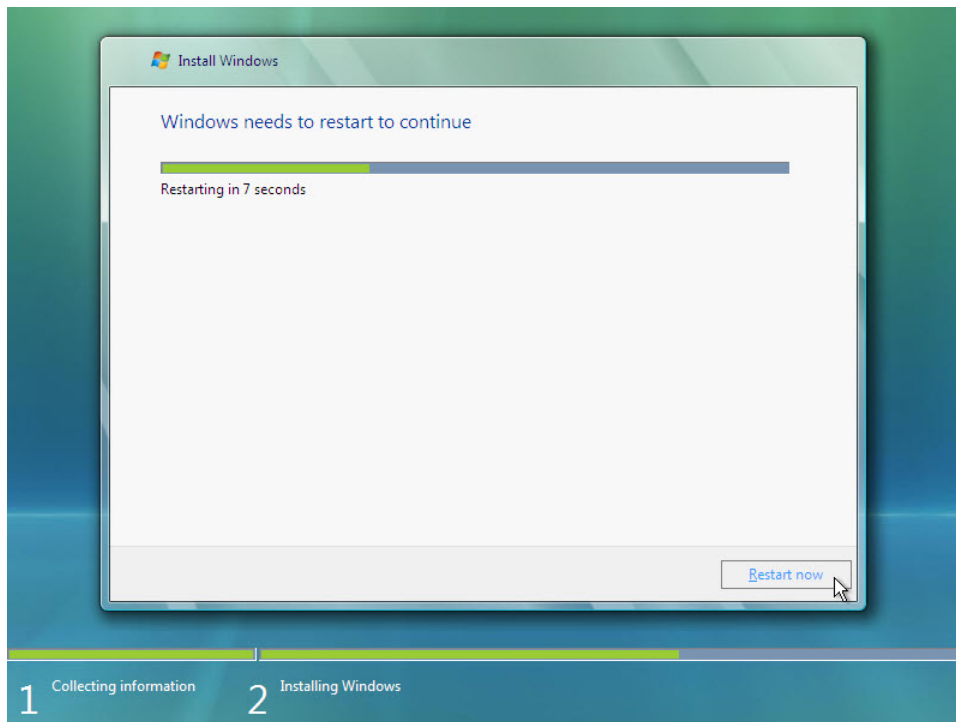


**Step 4: Installing Windows Vista**

- a. The **Installing Windows ...** window opens. Windows Vista Setup may take up to 50 minutes to configure your computer.



- b. The **Windows needs to restart to continue** window opens. Your computer will automatically restart or you can click **Restart now**.



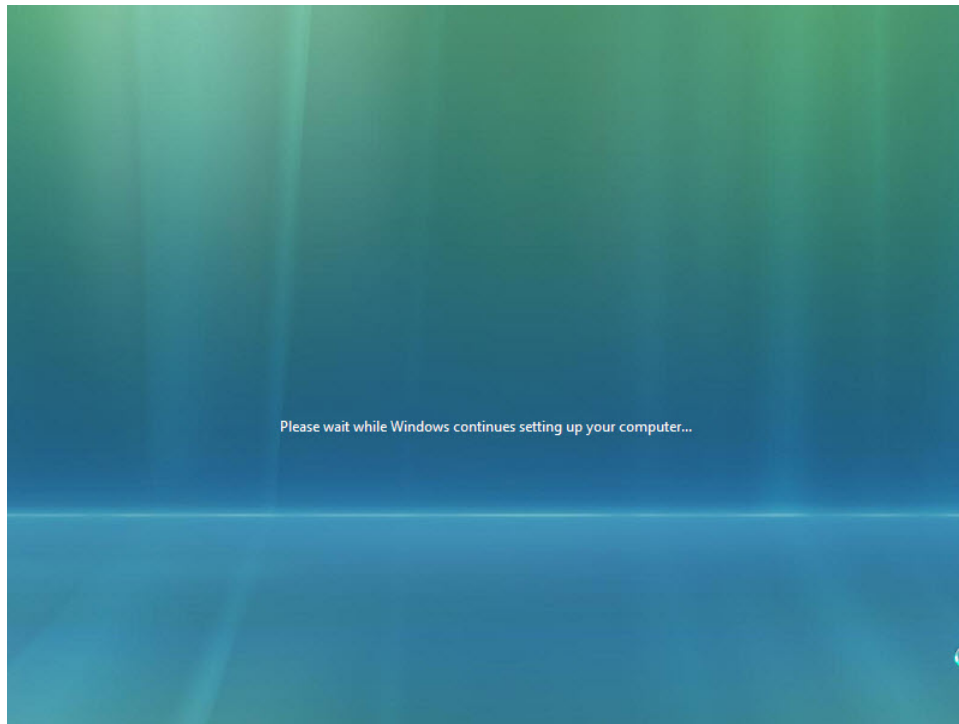
## Lab - Install Windows 7 or Vista

---

- c. If you get the message **Press any key to boot from CD or DVD**, do not press any key and Windows will boot from the hard disk to continue the installation.

A black rectangular box containing the text "Press any key to boot from CD or DVD...\_" in a white, monospaced font.

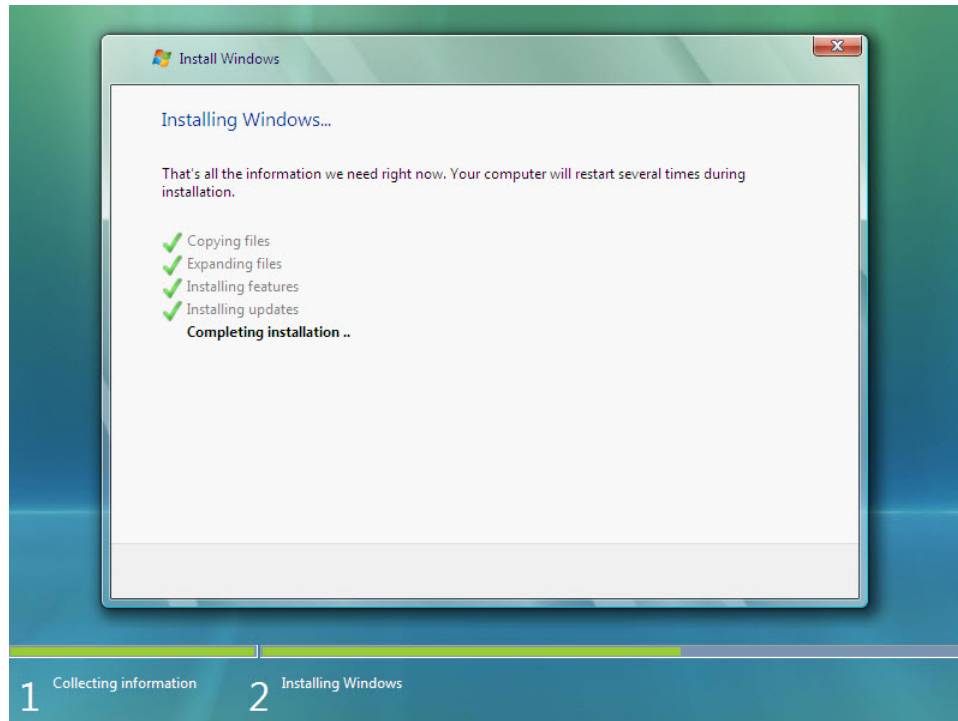
- d. The **Please wait while Windows continues setting up your computer ...** screen appears.



## Lab - Install Windows 7 or Vista

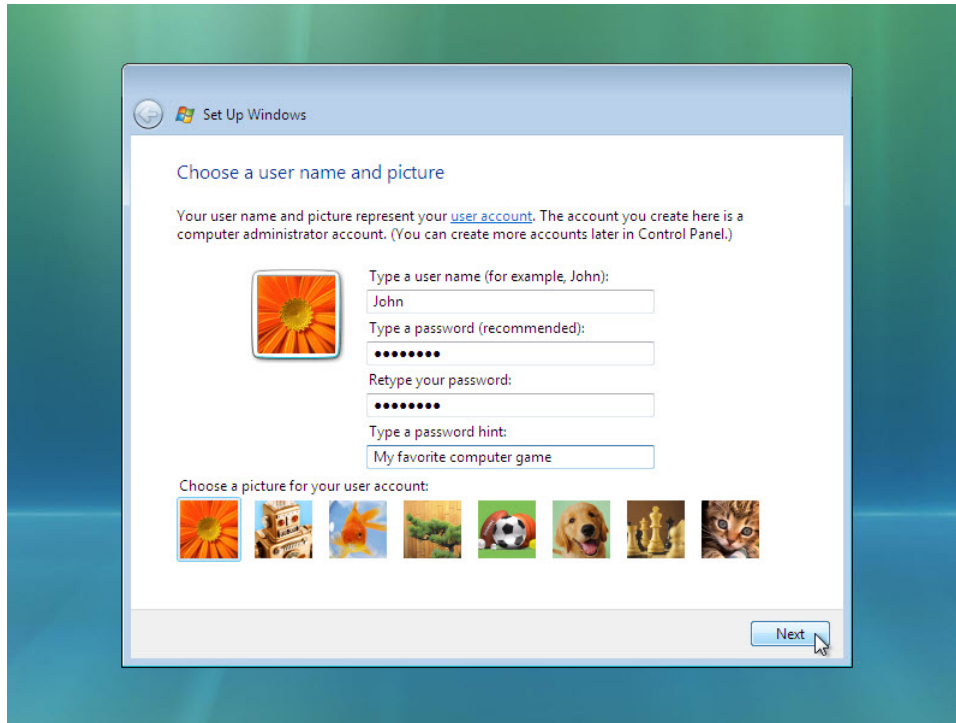
---

- e. The **Installing Windows ...** window opens. Windows may reboot a few more times. This may take several minutes.



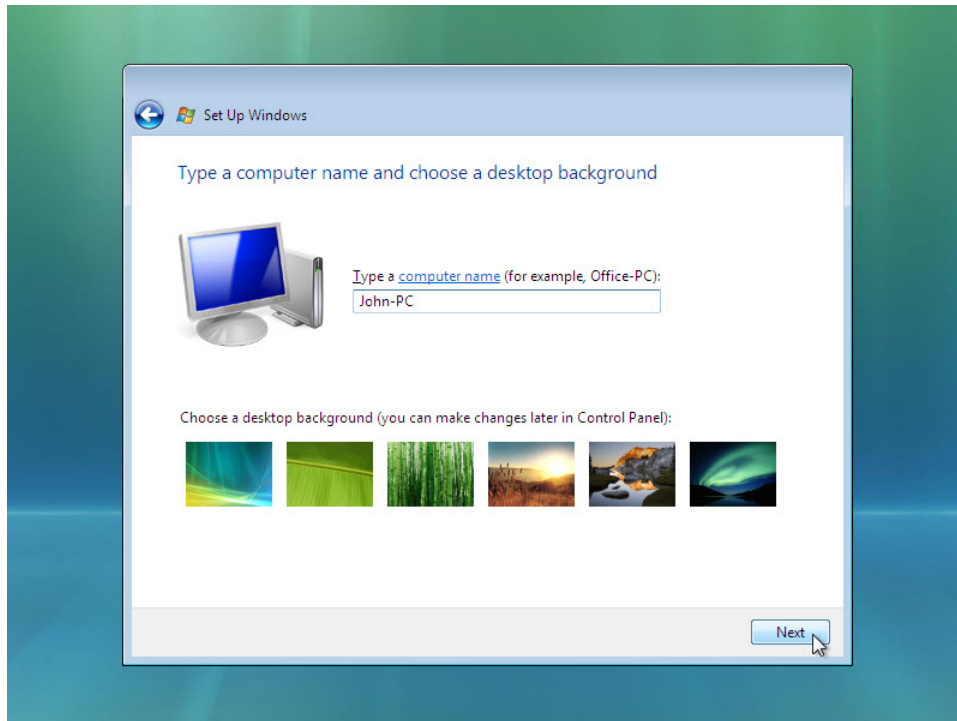
### Step 5: Setting up Windows

- a. The **Choose a user name and picture** window opens. Type the name provided by your instructor. Type the Administrator password provided by your instructor. When you type in a password, two new fields will appear. Retype the password and the password hint. Click **Next**.

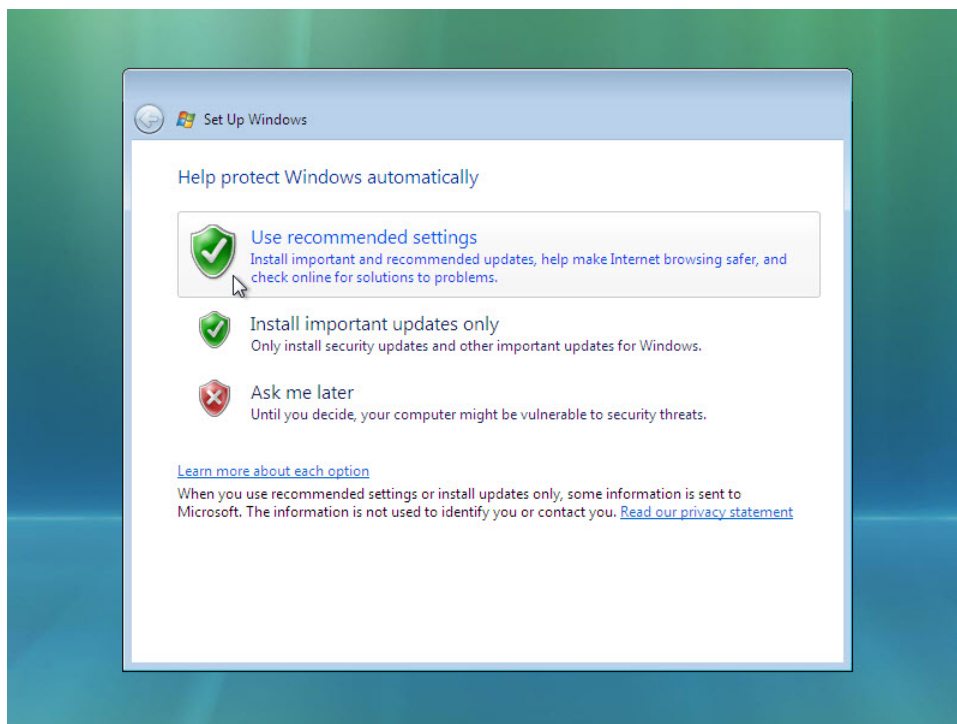


## Lab - Install Windows 7 or Vista

- b. The **Type a computer name and choose a desktop background** window opens. Type the computer name provided by your instructor. Click **Next**.



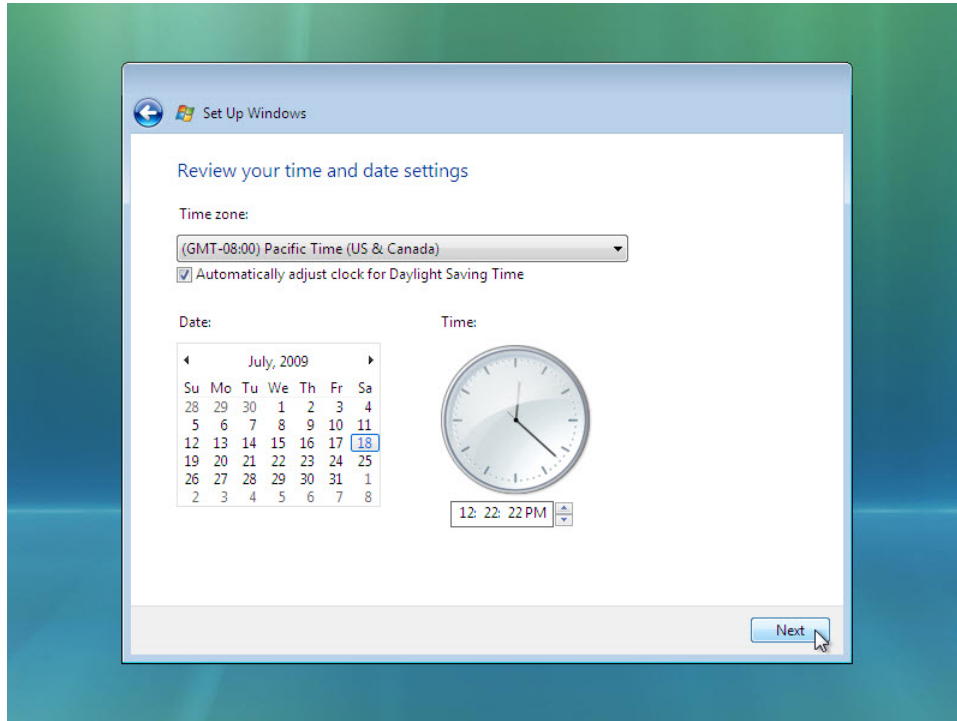
- c. In the **Help protect Windows automatically** window, click **Use recommended setting**.





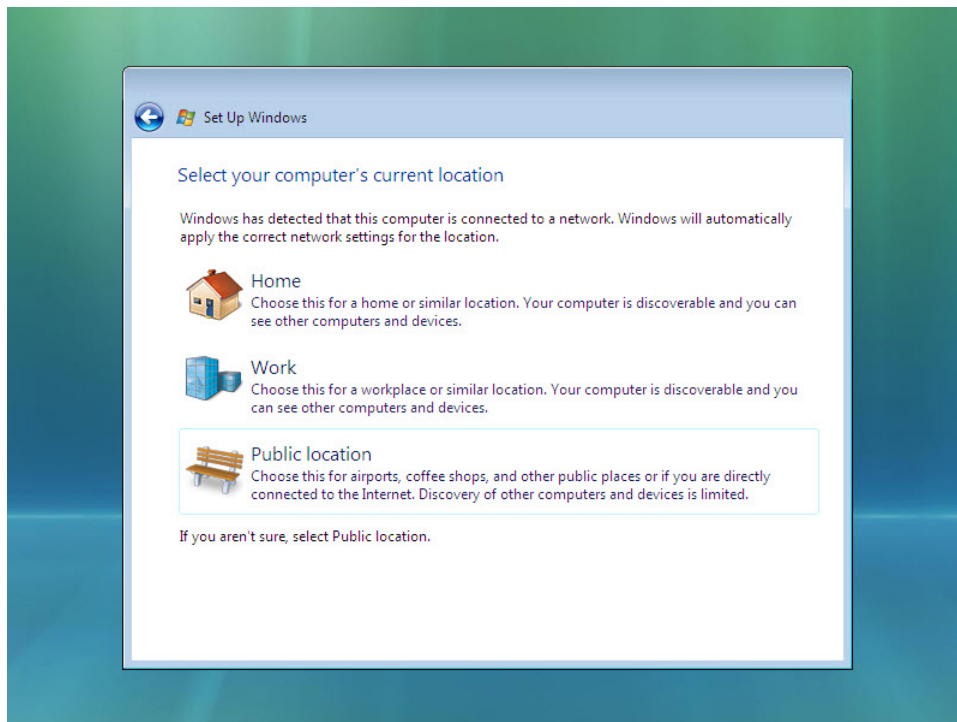
## Lab - Install Windows 7 or Vista

- d. In the **Review your time and date settings** window, configure the computer clock to match your local date, time, and time zone. Click **Next**.

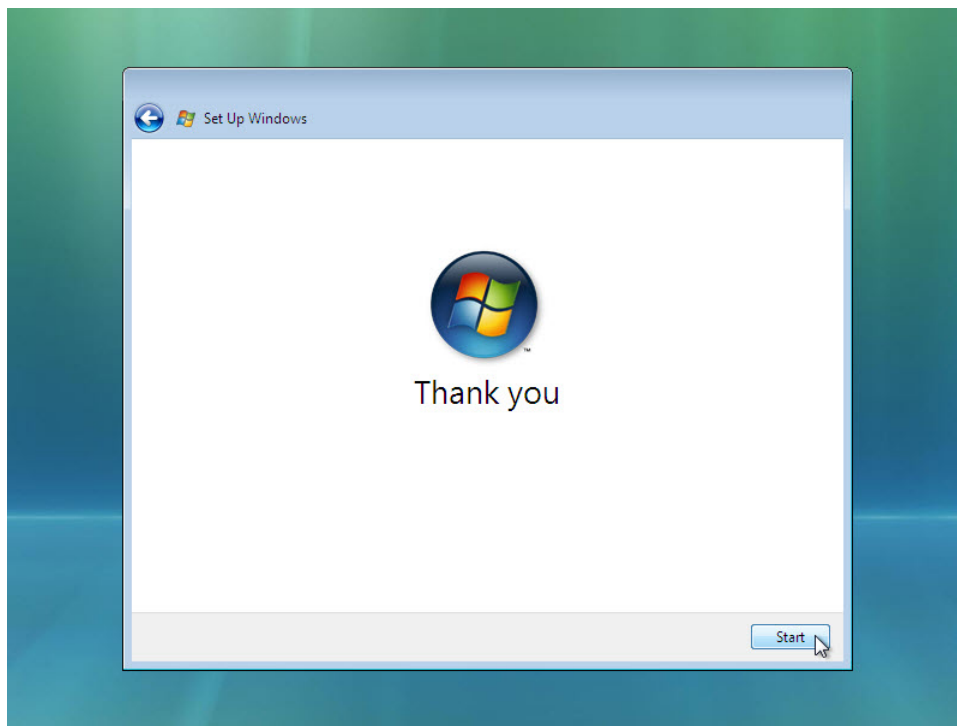


- e. The **Select your computer's current location** window opens. Select the option provided by your instructor.

**Note:** This screen will not show up if the installation did not correctly install drivers for the network card.



- f. In the **Thank you** window, click **Start**.



- g. The **Set Up Windows** section is completed.  
h. The **Please wait while Windows checks your computer's performance** screen appears.



- i. Windows Vista boots for the first time.



- j. The login screen appears. Enter the password that you used during the install process and click the **blue arrow** to login.



- k. The **Preparing your desktop ...** screen appears. Your account profile is created and configured.



- l. The **Welcome** screen appears. Windows Vista is now installed.

